

# Turmdrehkran K 28 S

Tower Crane    Grue à tour



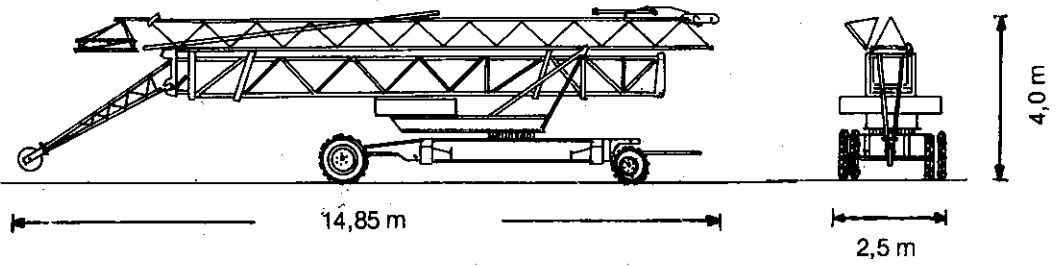
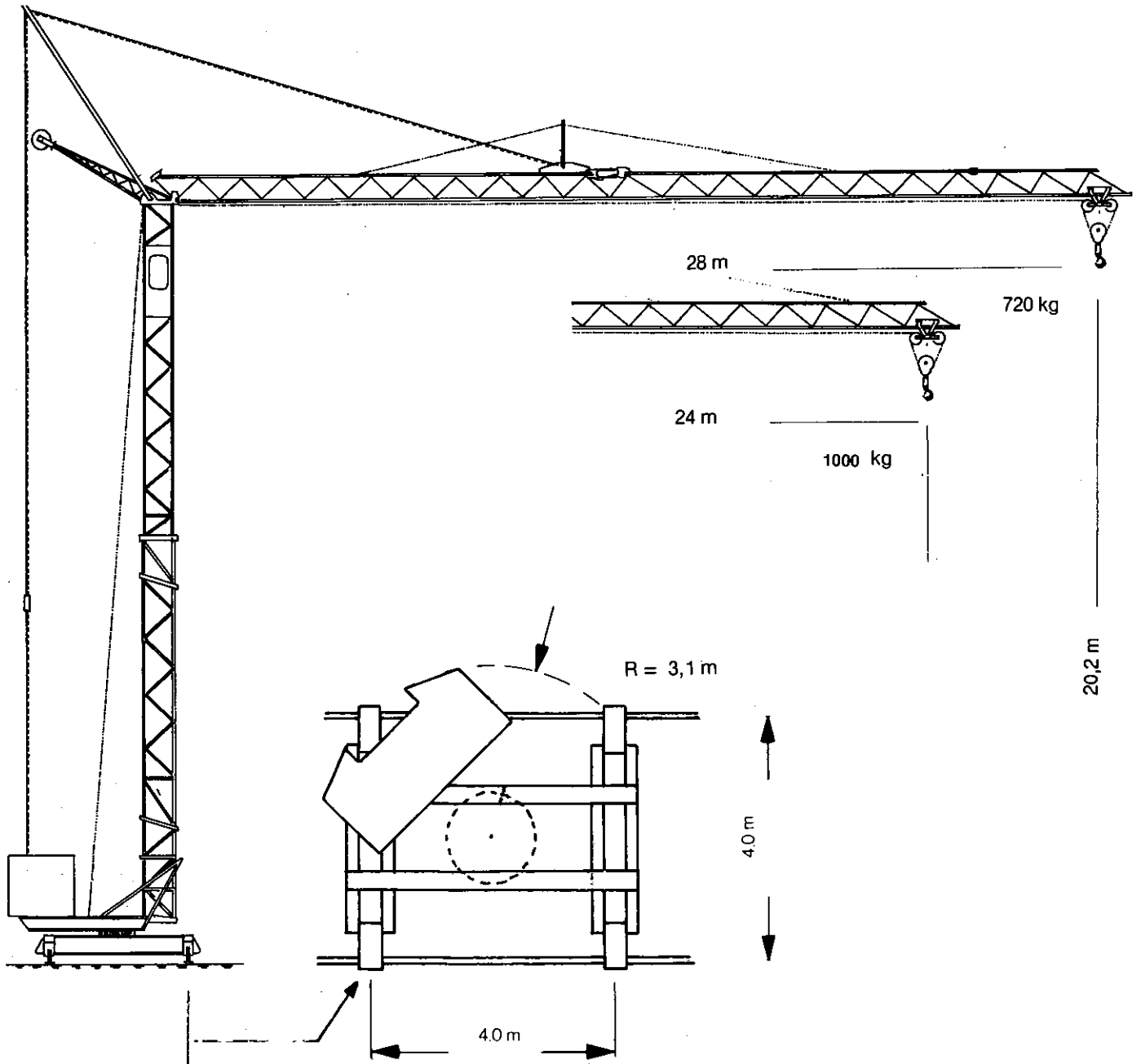
**Das Kransystem  
mit der Qualität  
bis ins Detail.**

**The crane system by quality  
to the detail.**

**Dans ces grues là le moindre détail  
est synonyme de qualité.**



**KÖNIG-KRANE**  
**Made in Germany**




**Transportgewicht**  
Road transport weight 16000 kg  
**Poids de transport**


**Abnehmbarer Ballast**  
Counterweight removable 11000 kg  
**Charge déplaçable**


**Teilballastverfahrbar**  
Transportable with partial counterweight  
**Acharge partiellement déplaçable**







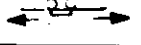


# K 28 S

## Technische Daten - Technical data Caractéristiques techniques

Ausleger Länge Length of jib Longue de flèche m	<b>Ausladung und Tragfähigkeit</b> <b>Radius and capacity</b> <b>Portée et charge</b>																
	12,68	13	14	15	16	17	18	19	20	21	22	23	24	25	26	27	
28 kg	2000	1940	1770	1630	1505	1395	1305	1440	1145	1080	975	920	875	830	790	755	720

Ausleger Länge Length of jib Longue de flèche m	<b>Ausladung und Tragfähigkeit</b> <b>Radius and capacity</b> <b>Portée et charge</b>											
	14	15	16	17	18	19	20	21	22	23	24	
24 kg	2000	1890	1745	1625	1515	1420	1335	1260	1190	1125	1000	

Ausleger Länge Length of jib Longue de flèche m	<b>Ausladung und Tragfähigkeit</b> <b>Radius and capacity</b> <b>Portée et charge</b>																			
	9,2	10	11	12	13	14	15	16	17	18	19	20	21	22	23	24	25	26		27
28 kg	3000	2690	2380	2130	1880	1710	1565	1440	1335	1240	1155	1080	1015	955	900	850	805	765	725	690

		
	 45 m/min. - 1000 kg (9 kW)	22,5 m/min. - 2000 kg (9 kW)
	 22,5 m/min. - 2000 kg (7,5 kW)	11,25 m/min. - 3000 kg (7,5 kW)
 6 m/min. - 2000 kg (2,5 kW)	3 m/min. - 3000 kg (2,5 kW)	
	15 + 30 m/min.	1,1 + 1,5 kW
	0 - 1 U/min.	3 kW
		 380 V Gesamtanschlußwert 13,5 kW

